

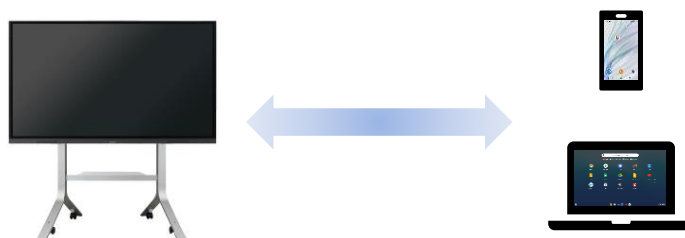
Bytello Share Application Guide 【Wireless Casting】

**Product :
PN-L652B
PN-L752B
PN-L862B**

Introduction

【About Bytello Share】

The screen can be shared and displayed mutually between the monitor and the devices.
The monitor and the devices to be connected must be connected to the same network.
*Connection to all devices is not guaranteed. *A router or access point is required excluding some functions.



【Supported devices】

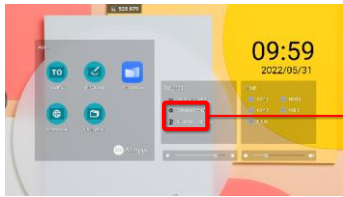
Device type	OS	Supported version
PC	Windows	Windows 8.1/10/11
	Chrome OS	Chrome OS version 87 or later
	macOS	macOS 10.15/11/12
Smart device (Smartphone, tablet PC)	Android	Android 8/9/10/11
	iOS/iPadOS	iOS 13/14/15 iPadOS 13/14/15

【Main Features】

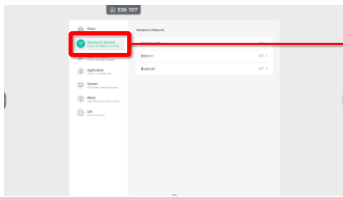
Feature	About	Supported devices
Screen Share	Share the client device screen to the monitor. Touchback is only available on Windows and macOS devices, in case Bytello Share client App is installed and used.	All devices
Desktop Sync	Mirror the monitor screen to the client device.	All devices
File sharing	Share audio, video and photo file from smart devices to the monitor.	Smart devices
Wireless camera and microphone	Share the images or audio from phone camera or microphone to the monitor in real time.	Smart devices
Multiple screens	Share multiple device screens to the monitor at the same time, and the screens of the monitor will be split automatically. (Up to 6 screens with static image guaranteed, including up to 1 screen with moving content(video).)	All devices
Duplicate Screen	Duplicate the monitor screen to other monitors with Bytello Share.	PN-L652B PN-L752B PN-L862B

Preparation (monitor)

1. Configure the network connection settings on home screen in APPLICATION mode.



Administrator Settings



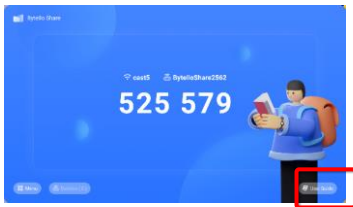
Wireless & Network

Refer to the operation manual for detailed instructions.

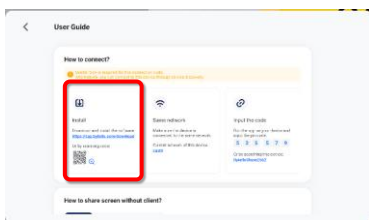
2. Select "Bytello Share".



3. Select "User Guide" in lower right corner of the screen.

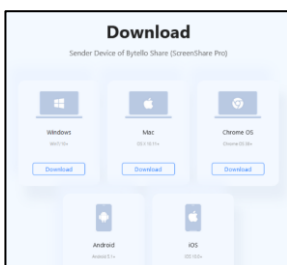


4. Operate the client device and access the download webpage using the displayed QR code or URL



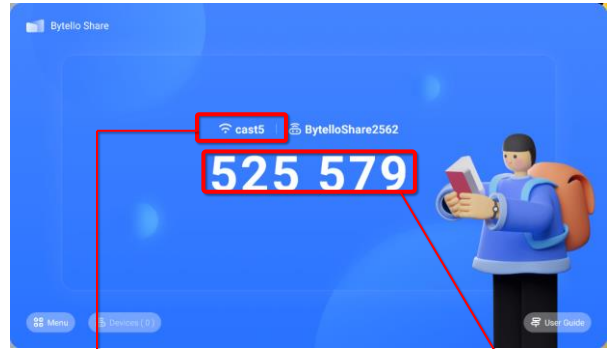
*Use the Internet to connect to the web page.

5. Select OS and install client apps.



*Refer page 8 about sharing screen without the client apps.

6. Connect the client device to an access point on the same network as the monitor

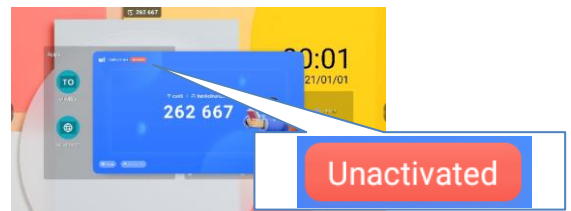


Network name the monitor is connecting

Connection code

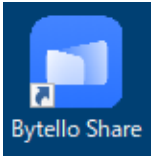
Make sure that the device you want to connect is also connected to this network.

About Bytello Share activation. If the monitor is connected to the network and has never been connected to the Internet before, the message that the application has not been activated will be displayed. If the application is used in this state, the connection will be automatically disconnected after 10 minutes. Once connected to the internet, the application will automatically become activated.

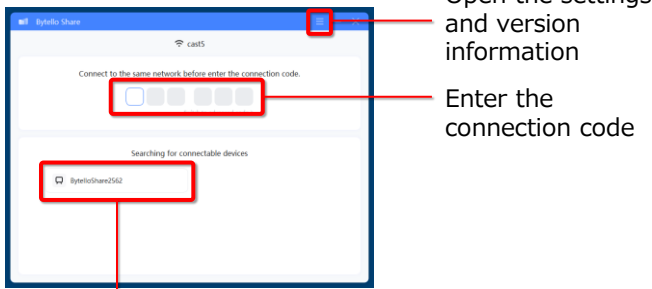


In some cases, you may need to select Activation from the Bytello settings menu.

1. Start the Bytello Share client application.



2. Check the 6-digit connection code displayed on the Bytello Share screen of the monitor and enter it. Alternatively, select the device you want to connect to from the displayed devices.

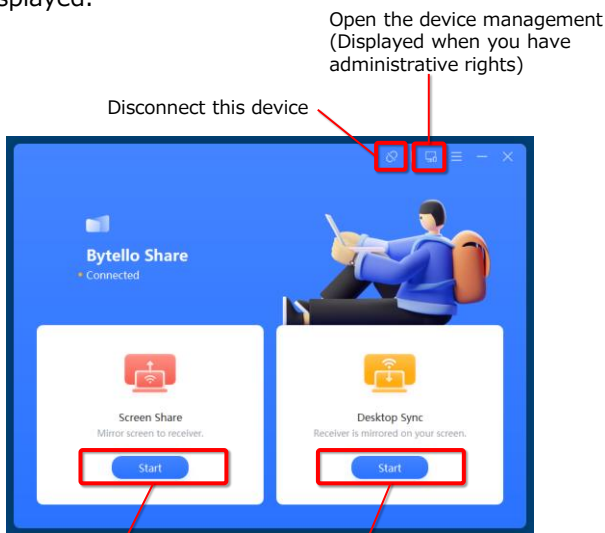


Open the settings and version information

Enter the connection code

This is displayed if allowing device search is enabled on the display.

3. If the connection is successful, the screen below is displayed.



Open the device management (Displayed when you have administrative rights)

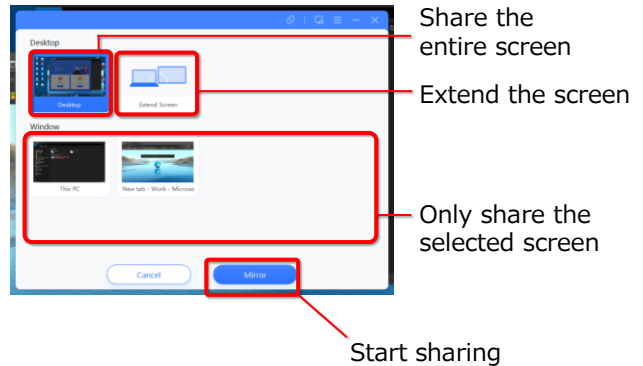
Disconnect this device

Display the device screen on the monitor

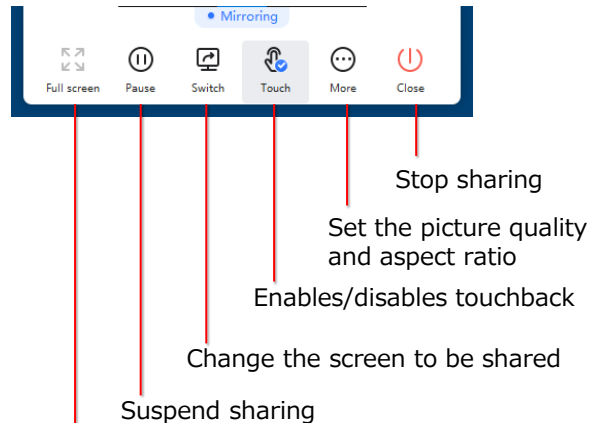
Display the monitor screen on the device

【Screen Share】

When starting a screen sharing, select the screen to be shared.



During screen sharing, a menu is displayed at the top of the screen.



Maximize the screen of this device when multiple devices are sharing at the same time

Suspend sharing

Change the screen to be shared

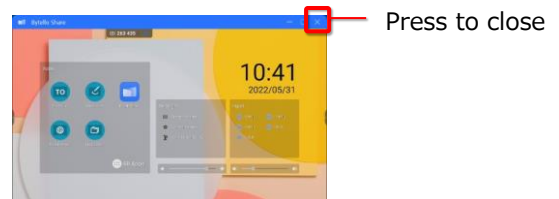
Enables/disables touchback

Set the picture quality and aspect ratio

Stop sharing

【Desktop Sync】

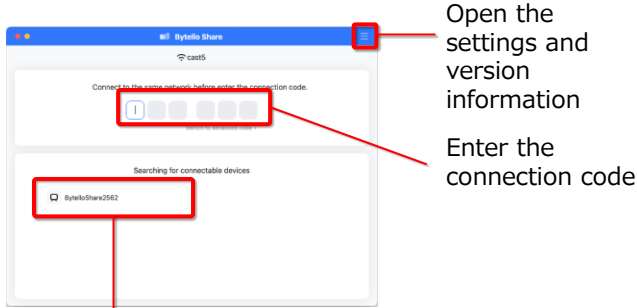
When you start sharing the monitor screen, the new screen window opens. To stop receiving, close the window.



1. Start the Bytello Share client application.



2. Check the 6-digit connection code displayed on the Bytello Share screen of the monitor and enter it. Alternatively, select the device you want to connect to from the displayed devices.

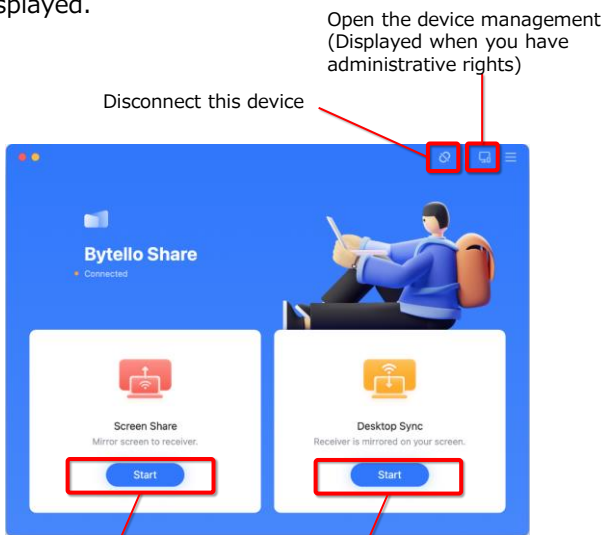


Open the settings and version information

Enter the connection code

This is displayed if allowing device search is enabled on the monitor.

3. If the connection is successful, the screen below is displayed.



Open the device management (Displayed when you have administrative rights)

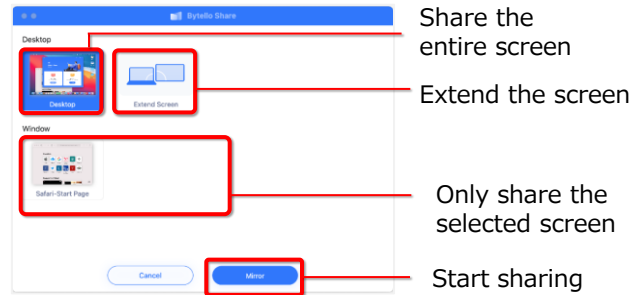
Disconnect this device

Displays the device screen on the display

Displays the display screen on the device

【Screen Share】

When starting a screen sharing, select the screen to be shared.



Share the entire screen

Extend the screen

Only share the selected screen

Start sharing

During screen sharing, a menu is displayed at the top of the screen.



Stop sharing

Set the picture quality and aspect ratio

Enables/disables touchback

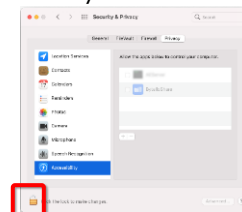
Change the screen to be shared

Suspend sharing

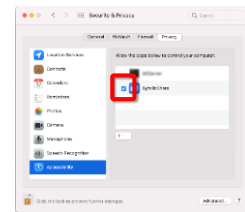
Maximize the screen of this device when multiple devices are sharing at the same time

*To enable touchback, the following settings are required.

Open "System Preferences" → "Security & Privacy" → "Privacy" → "Accessibility".



Click on the key icon and enter the password.



Checkmark Bytello Share

【Desktop Sync】

When you start sharing the monitor screen, the new screen window opens. To stop receiving, close the window.

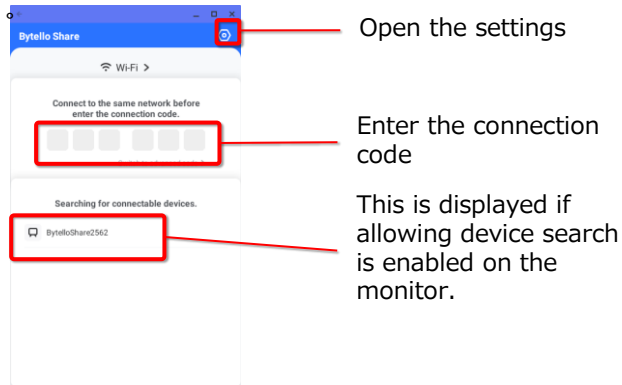
Press ● to close



1. Click "Bytello Share."



2. Check the 6-digit connection code displayed on the Bytello Share screen of the monitor and enter it. Alternatively, select the device you want to connect to from the displayed devices.

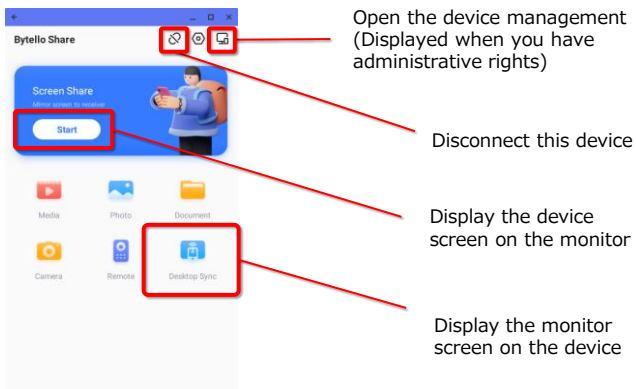


Open the settings

Enter the connection code

This is displayed if allowing device search is enabled on the monitor.

3. If the connection is successful, the screen below is displayed.



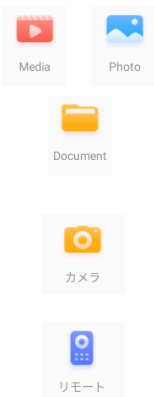
Open the device management (Displayed when you have administrative rights)

Disconnect this device

Display the device screen on the monitor

Display the monitor screen on the device

*In addition to screen sharing, the following functions are available.



Audio and video, photos, PDF and text files stored on the device can be sent to the monitor for playback.

The content captured by the device's camera can be displayed on the monitor.

Operate the monitor using the device.

【Screen Share】

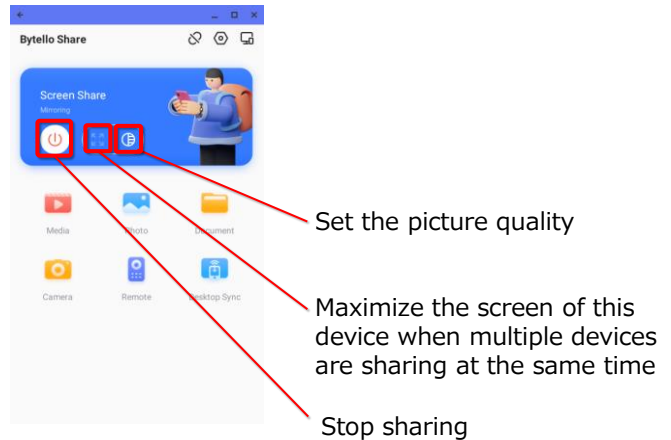
When starting a screen sharing, select the screen to be shared.



Select the screen to share.

Start sharing

During sharing, the application will be on the screen below.



Set the picture quality

Maximize the screen of this device when multiple devices are sharing at the same time

Stop sharing

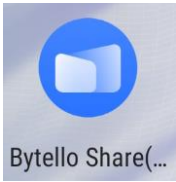
【Desktop Sync】

When you start sharing the monitor screen, it can be displayed on the device.

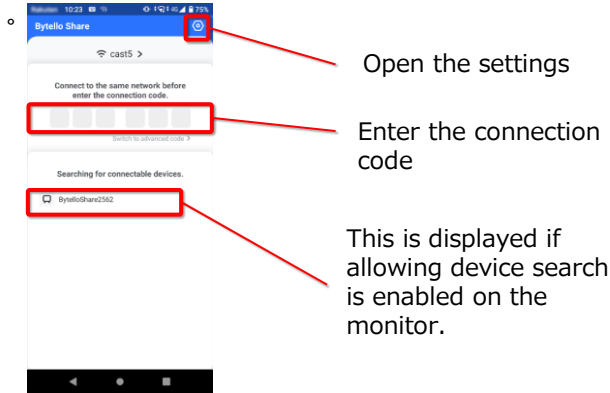


Press to close

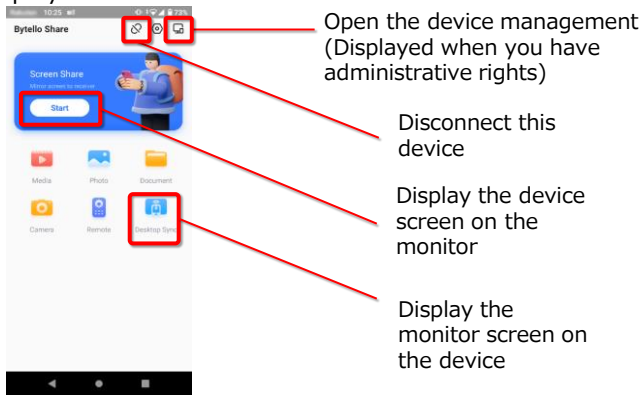
1. Start the Bytello Share client application.



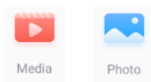
2. Check the 6-digit connection code displayed on the Bytello Share screen of the monitor and enter it. Alternatively, select the device you want to connect to from the displayed devices.



3. If the connection is successful, the screen below is displayed.



*In addition to screen sharing, the following functions are available.



Audio and video, photos, PDFs and text files stored on the device can be sent to the display for playback.



Document



Camera

The content captured by the device's camera can be displayed on the monitor.

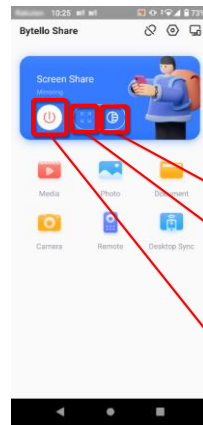


Remote

Operate the display using the device.

【Screen Share】

During sharing, the application will be on the screen below.



Set the picture quality

Maximize the screen of this device when multiple devices are sharing at the same time

Stop sharing

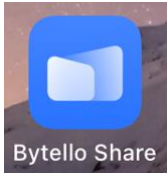
【Desktop Sync】

When you start sharing the monitor screen, it can be displayed on the device.

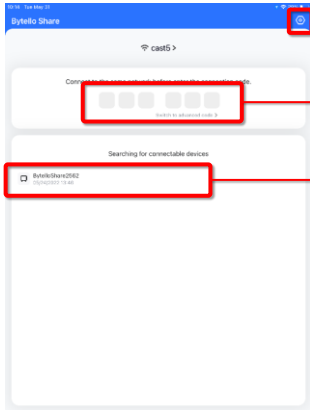


Press to close

1. Start the Bytello Share client application.



2. Check the 6-digit connection code displayed on the Bytello Share screen of the monitor and enter it. Alternatively, select the device you want to connect to from the displayed devices.

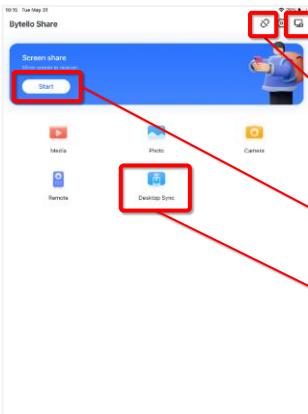


Open the settings

Enter the connection code

This is displayed if allowing device search is enabled on the monitor.

3. If the connection is successful, the screen below is displayed.



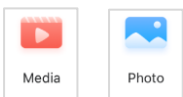
Open the device management (Displayed when you have administrative rights)

Disconnect this device

Display the device screen on the monitor

Displays the monitor screen on the device

*In addition to screen sharing, the following functions are available.



Audio and video, photos, PDFs and text files stored on the device can be sent to the monitor for playback.



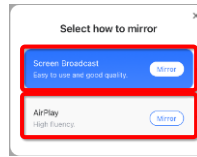
The content captured by the device's camera can be displayed on the display.



Operate the monitor using the device.

【Screen Share】

You can choose between two methods of sharing the screen

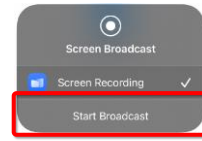


【 Broadcast 】

【AirPlay】

【Broadcast】

Share using the client app's functions.



Start sharing



Switch to any application.

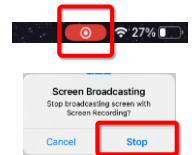
During sharing, the application will be on the screen below.



Set the picture quality

Maximize the screen of this device when multiple devices are sharing at the same time

Stop sharing



You can also stop sharing by tapping the red indicator at the top of the screen

【AirPlay】

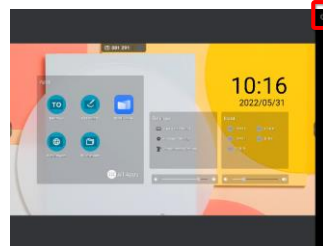
Share the screen using standard operating system functions.

Follow the instructions displayed in the app. Select Bytello Share to start sending.

See p.8 for more information.

【Desktop Sync】

When you start sharing the monitor screen, it can be displayed on the device.

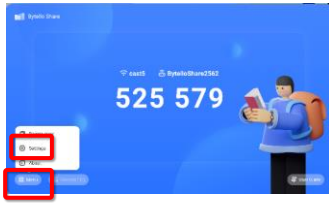


Press to close

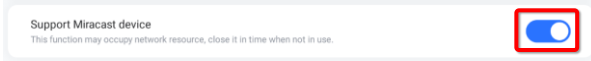
Miracast/Google Cast/AirPlay

【Miracast】

1. Select "Menu" → "Settings" in Bytello Share.

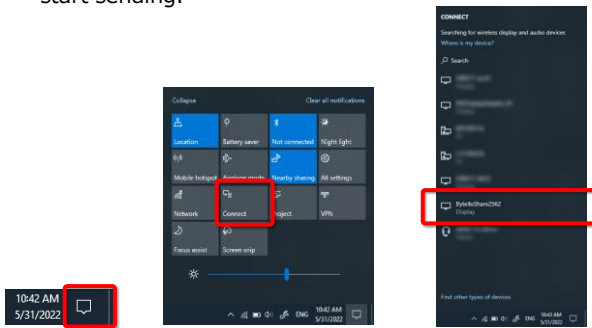


2. Enable support for Miracast devices.



【Windows】

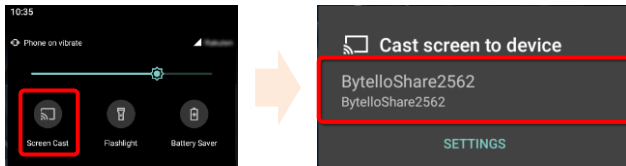
1. With Wi-Fi enabled, click "Connect" from the Action Center.
2. Select the name of the device you wish to connect and start sending.



Start sending

【Android】

1. With Wi-Fi enabled, select "Screen Cast" from the Quick Settings at the top of the screen.
2. Select the name of the device you wish to connect and start sending.



Start sending

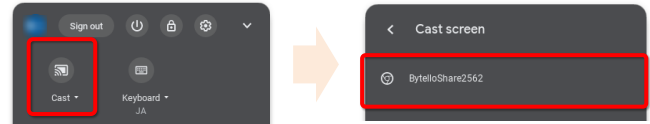
*If the device is not displayed, it may appear after selecting setting button and enabling wireless display.



【Google Cast】

【Google Chrome OS】

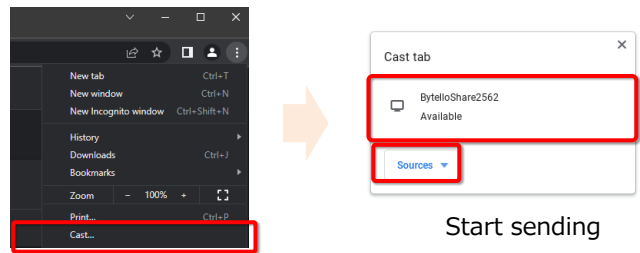
1. Connect the device and the monitor to the same network.
2. Select "Cast" from the Quick Settings panel in the lower right corner.
3. Select the name of the device you wish to connect and start sending.



Start sending

【Chrome browser】

1. Connect the device and the monitor to the same network.
2. Select "Cast" from the browser menu.
3. Select the screen you wish to cast from Tab or Desktop and then click on the searched device to start sending.

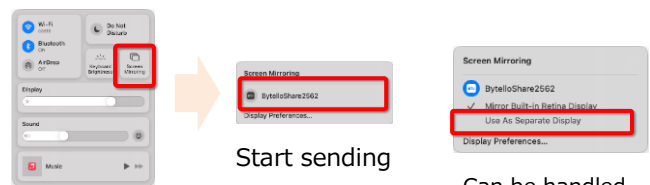


Start sending

【AirPlay】

【macOS】

1. Connect the device and the monitor to the same network.
2. Select "Screen Mirroring" from the Control Center, select the device you wish to connect and start sending.

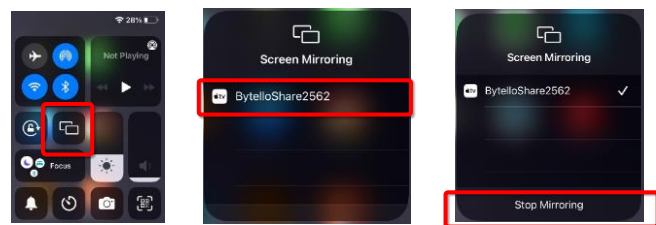


Start sending

Can be handled as an external monitor

【iOS/iPadOS】

1. Connect the device and the monitor to the same network.
2. Select Screen Mirroring from the Control Center, select the device you wish to connect and start sending.



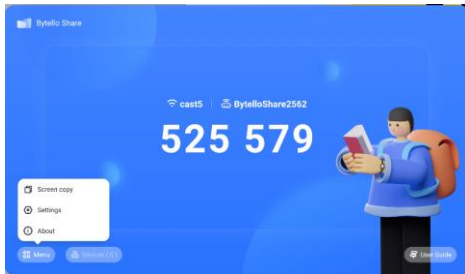
Start sending

Stop sending

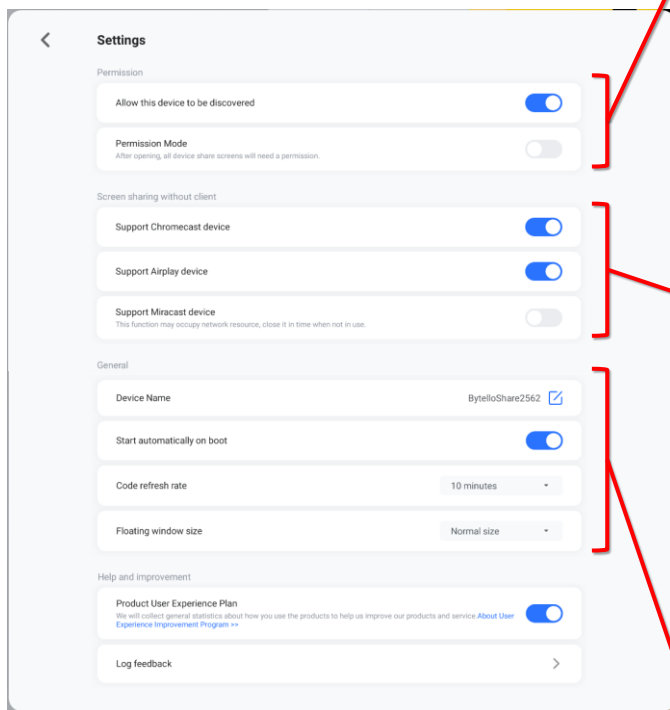
Setting

Describes the Bytello Share setting.

【Setting】



Select "Menu" → "Settings" in Bytello Share.

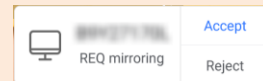


【Permission】

When "Allow this device to be discovered" is enabled, devices connected to the same network will be displayed in the search results as connected devices.

If "Permission mode" is enabled, a confirmation message is displayed each time a request to send or receive a screen is received from a device, and the screen is sent or received if the request is confirmed.

It is recommended to enable "Permission mode", as enabling "Allow this device to be discovered" increases the risk of connections from unintended devices.



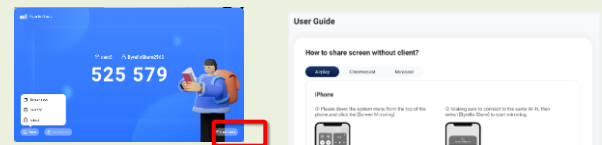
Example of confirmation message displayed on the monitor screen

【Screen sharing without client】

Enables screen transmission using standard OS protocols without installing the Bytello Share app.

ChromecastGoogle Chrome OS devices
AirplaymacOS, iOS/iPadOS devices
MiracastWindows, Android devices

See p. 8 for detailed connection instructions.
For detailed connection instructions, select "User Guide" in Bytello Share to view and confirm.



*Connection to all devices is not guaranteed.
*While Miracast is enabled, the network will be overloaded, so disable it if you do not need it.

【General】

"Device Name"

Change the device name displayed on the monitor.

"Start automatically on boot"

Bytello Share is automatically started when the display is started.

"Code refresh rate"

The interval at which the connection code is automatically updated.

"Floating windows size"

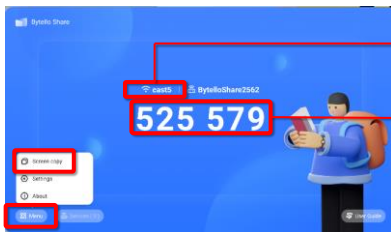
Selects how the connection code is displayed in the upper part of the screen.

Other functions

Describes other features of Bytello Share

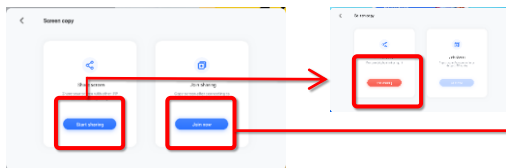
【Screen copy】

You can duplicate the screen of the monitor on other monitors.



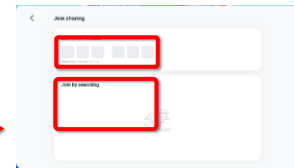
Network name the monitor is connecting
Make sure that the device you want to connect is also connected to this network.
Connection code

Select "Menu" → "Screen copy" in Bytello Share



Send the screen Receive the screen

When to stop sharing, select "End sharing".

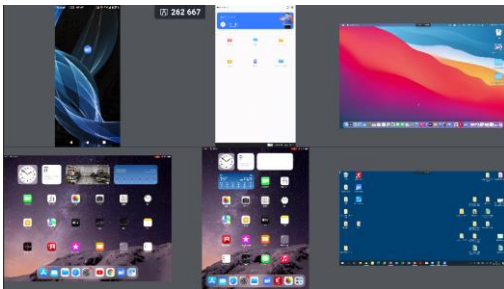


To join the share, enter the 6-digit connection code. Alternatively, select the device you want to connect to from the devices displayed.

【Multiple screens】

Bytello Share can receive and display multiple screens simultaneously.

(Up to 6 screens with static image guaranteed, including up to 1 screen with moving content (video).)

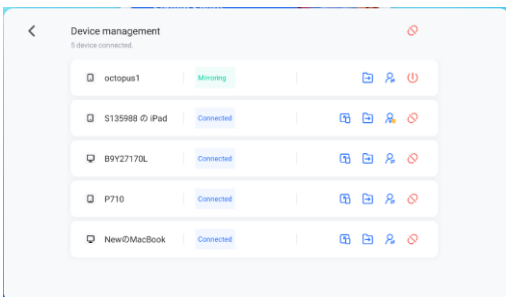


- Each screen can be reordered by dragging
- Tap each screen to display the following buttons.

Icon	Function	Icon	Function
	Stop screen sharing		Maximize/unmaximize the screen
	Display software keyboard		Floating monitor screen ON/OFF
	Switching to another screen during maximization		Audio ON/OFF

【Device management】

The monitor or the device with administrative rights can control the operation of all connected terminals at once.



Icon	State of the device displaying the icon	Function
	Device with administrative right	Disconnect all devices
	Device with administrative right	Cancel own administrative right
	Device being connected	Grant administrative right
	Device being connected	Transfer administrative right from other devices
	Device with administrative right	Cancel administrative right
	Device being connected	Send a file to the device
	Device being connected	Switch on/off the function that allows you to control the monitor from the connected device screen
	Device that is connected and not doing anything	Have the device start sharing screen
	Device being connected	Disconnect the device

[Notes on materials].
Microsoft and Windows are either registered trademarks or trademarks of Microsoft Corporation in the USA and other countries.
Android is a trademark of Google LLC.
Chrome OS is a trademark or registered trademark of Google LLC.
All other company and product names are trademarks or registered trademarks of their respective owners.